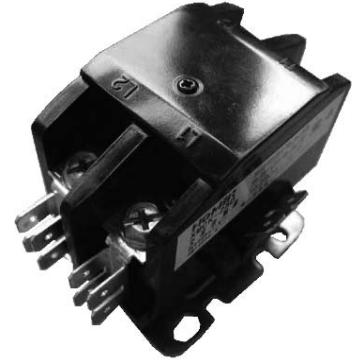


XMCK Series

Definite Purpose Contactors

Description

American Zettler XMCK series of Definite Purpose Contactors are electro-mechanical switching devices designed ideally for the HVAC industry. The most common applications of our contactors are found in refrigeration, ARI conditioning, and heating. Other applications include elevators, food service equipment, cranes, hoists, welding machines, power supplies, vending machines, lighting, pumps and compressors. XMCK contactors are built to the ARI 780/790 standard in our ISO 9001 manufacturing facility for high performance and great reliability. XMCK is an affordable solution with 1 to 2 pole configurations and ratings up to 50 amps.



Features

- A variety of termination options for specific application requirements
- Universal mounting plate: Easy replacement of competitor's contactors
- Convenient non-position sensitive mounting
- Performance unaffected by position mounting
- Dust-free internal construction
- UL, CUR file no. E222994

AMERICAN ZETTLER, INC.

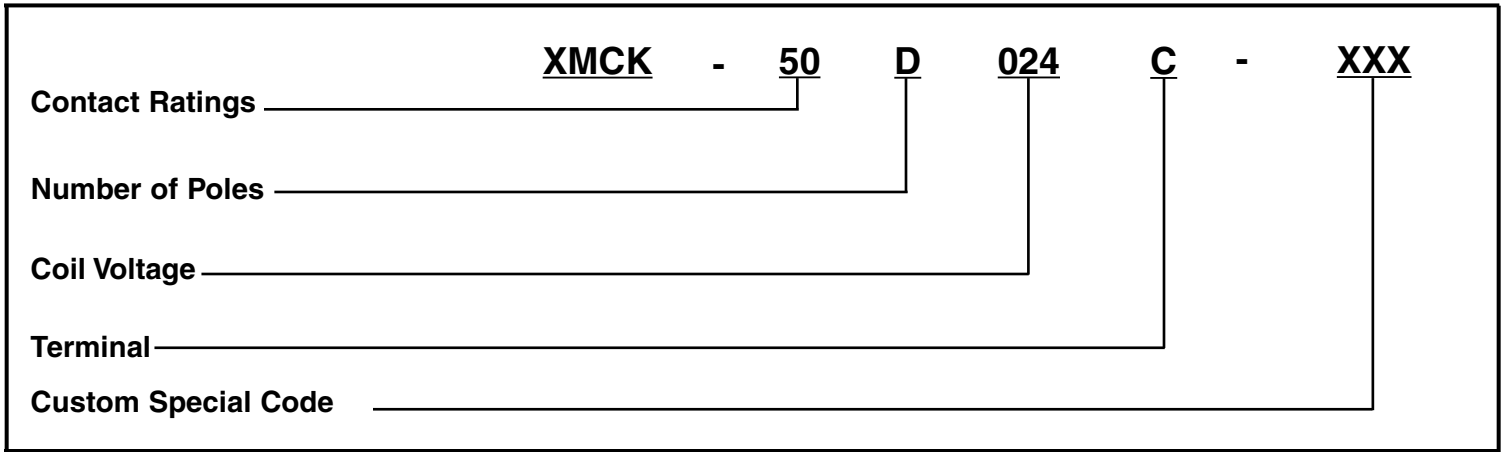
www.azettler.com

75 COLUMBIA • ALISO VIEJO, CA 92656 • PHONE: (949) 831-5000 • FAX: (949) 831-8642 • E-MAIL: SALES@AZETTLER.COM

1/31/12

XMCK Series

PART NUMBERING SYSTEM



Contact Ratings

| | |
|-----------|--------|
| 30 | 25 FLA |
| 40 | 30 FLA |
| 50 | 40 FLA |

Number of Poles

| | |
|-----------|------------------|
| D | 1-pole |
| DN | 1-pole + 1 shunt |
| 2 | 2-pole |

Coil Voltage

| | 50Hz | 60Hz |
|------------|---------|---------|
| 24 | 24 | 24 |
| 120 | 110-120 | 110-120 |
| 240 | 208-240 | 208-240 |
| 277 | --- | 277 |

Terminal with Quick Connects

| | |
|----------|--|
| A | Screw w/ quick connect |
| B | Sems clamp w/ quick connect |
| C | Slotted & Hex head washer w/ quick connect |
| D | Box Lug w/ quick connect |
| E | Box Lug w/ quick connect (Line) Slotted Hex head washer w/ quick connect (Load) |
| F | Slotted & Hex head washer w/ quick connect (Line) Box Lug w/ quick connect (Load) |

AMERICAN ZETTLER, INC.

www.azettler.com

75 COLUMBIA • ALISO VIEJO, CA 92656 • PHONE: (949) 831-5000 • FAX: (949) 831-8642 • E-MAIL: SALES@AZETTLER.COM

XMCK Series

Definite Purpose Contactors

General Data

| | |
|---------------------------------|---|
| Rated insulation voltage | 690 Vrms |
| Agency approvals | UL, CUR file E220475 |
| Operating position | Vertical and Horizontal mounting recommended |
| Ambient temperature | -20°C to 70°C -40°C to 70°C |
| Weight | 1Pole - 210g, 2Pole - 290g |
| Torque | Screws 25 lb-in/Lugs 25 lb-in |
| QC Wiring | The female connector should meet IEC 60760, necessary to ensure the reliability of connection between female connectors and QCterminals |

Electrical

| | |
|---|---------------------|
| Rated Operating voltage | 12V-600V max. |
| Switching frequency | 360 operations/hour |
| Electrical endurance (ARI 780/790) | 100,000 cycles |
| Mechanical endurance (ARI 780/790) | 500,000 cycles |

Electrical Ratings

| Full Load Amps (FLA) | Resistive Load Amps (RLA) | Locked Rotor Amps (LRA) | | | Pole Form | Order Number |
|----------------------|---------------------------|-------------------------|------|------|-----------|--------------|
| | | 240/277V | 480V | 600V | | |
| 25 | 30 | 150 | 125 | 100 | 1P | XMCK- 30D |
| | | | | | 1P+1shunt | XMCK- 30DN |
| 32 | 40 | 150 | 75 | 50 | 2P | XMCK - 302 |
| | | | | | 1P | XMCK - 40D |
| | | 180 | 150 | - | 1P+1shunt | XMCK - 40DN |
| 40 | 50 | 240 | 160 | 100 | 2P | XMCK - 402 |
| | | | | | 1P | XMCK - 50D |
| | | 240 | 150 | - | 1P+1shunt | XMCK - 50DN |
| | | | | | 2P | XMCK - 502 |

Coil Data

| Pole Form | Inrush VA | Sealed VA | Sealed (W) | Pickup Voltage | Dropout Voltage |
|-----------------------|-----------|-----------|------------|----------------|-----------------|
| 1 pole (D) | 32 | 7.0 | 2.0-4.0 | ≤ 0.8 Us* | ≥ 0.2 Us* |
| 1 pole + 1 shunt (DN) | | | | | |
| 2 pole (2) | 40 | 8.0 | 2.5-4.5 | | |

*Us = nominal coil voltage

AMERICAN ZETTLER, INC. www.azettler.com

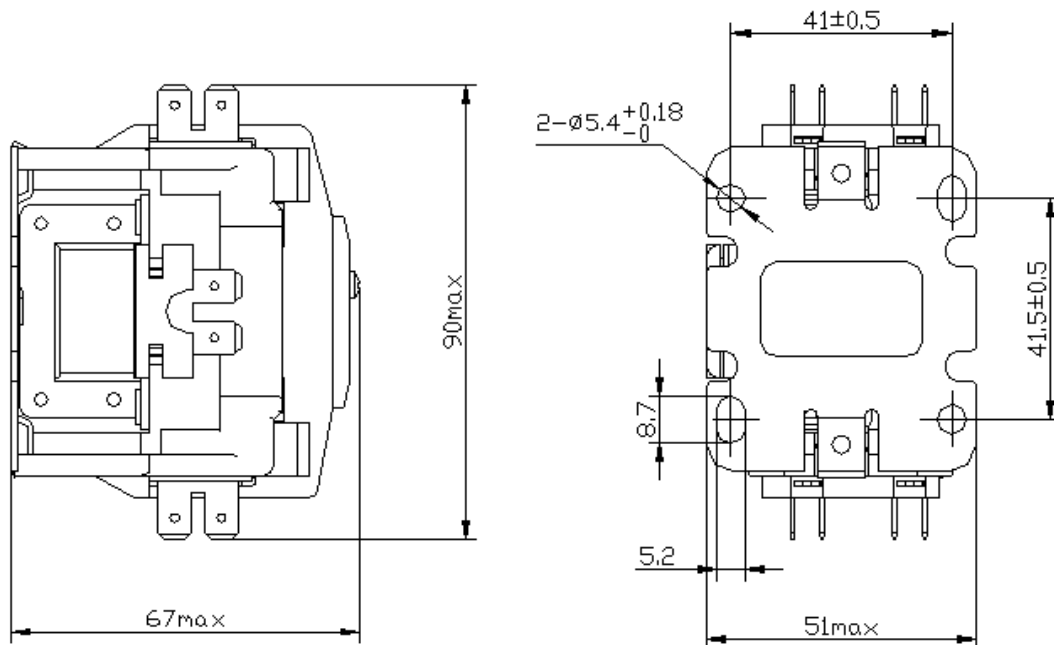
75 COLUMBIA • ALISO VIEJO, CA 92656 • PHONE: (949) 831-5000 • FAX: (949) 831-8642 • E-MAIL: SALES@AZETTLER.COM

XMCK Series

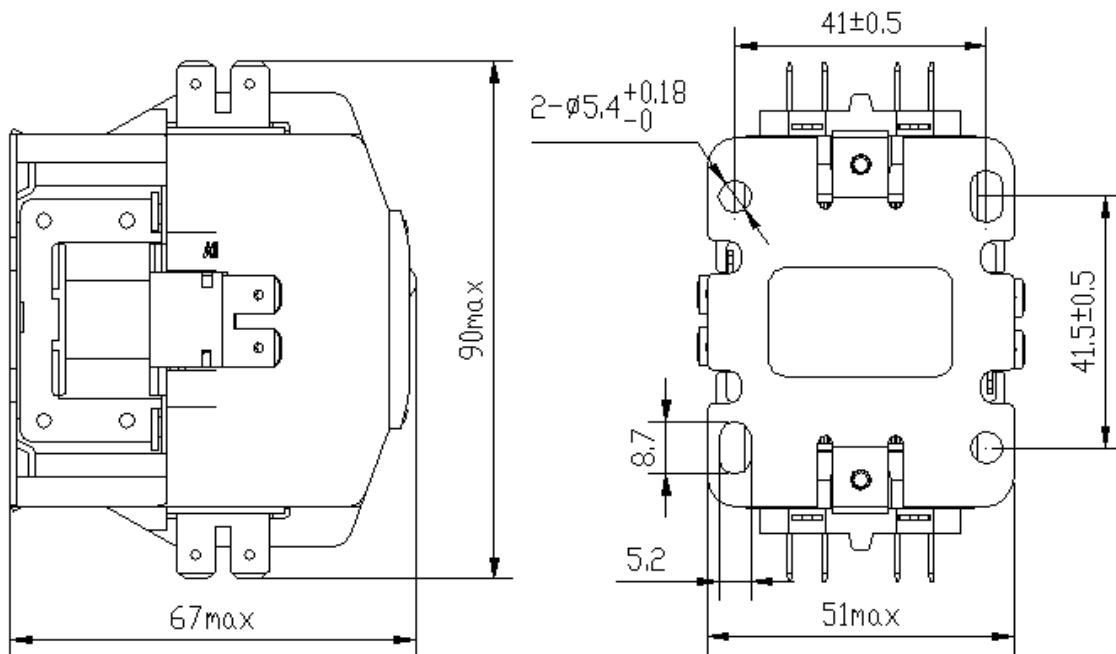
Definite Purpose Contactors

Note:

1. The locking torque for load circuit screw (M5) : 2.5N.m ~ 3.0 N.m.
2. If using terminal wiring, the harness should conform to IEC 60760 standard to insure safe wiring connection.



1 Pole/ 1Pole + 1 Shunt (25-40FLA)



2 pole (25-40FLA)

AMERICAN ZETTLER, INC. www.azettler.com

75 COLUMBIA • ALISO VIEJO, CA 92656 • PHONE: (949) 831-5000 • FAX: (949) 831-8642 • E-MAIL: SALES@AZETTLER.COM