

AZ2701

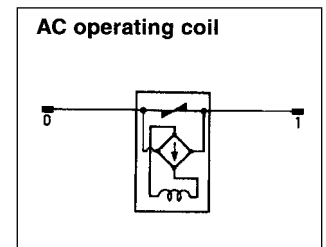
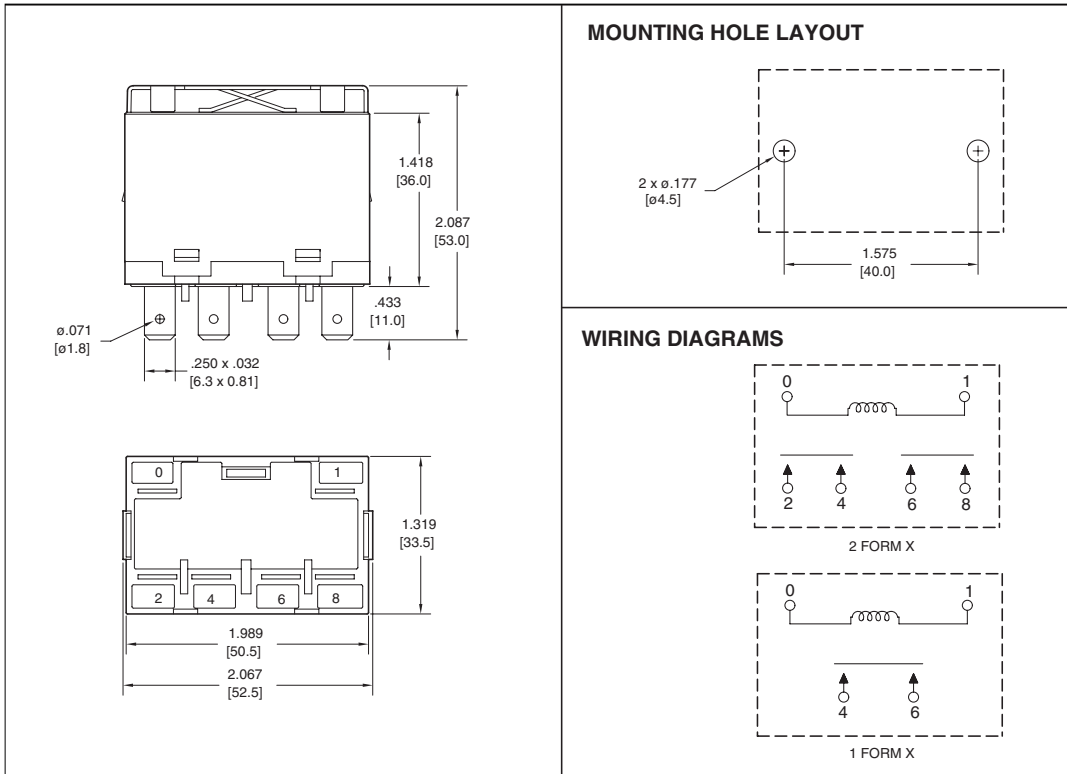
RELAY ORDERING DATA

COIL SPECIFICATIONS – DC COIL				ORDER NUMBER*	
Nominal Coil VDC	Must Operate VDC	Max. Continuous VDC	Coil Resistance $\pm 10\%$	1 Form X	2 Form X
3	2.25	4.2	5	AZ2701-1A-3D	AZ2701-2A-3D
6	4.50	8.4	19	AZ2701-1A-6D	AZ2701-2A-6D
12	9.00	16.8	75	AZ2701-1A-12D	AZ2701-2A-12D
24	18.00	33.7	300	AZ2701-1A-24D	AZ2701-2A-24D
48	36.0	67.5	1200	AZ2701-1A-48D	AZ2701-2A-48D
100	75.0	140.5	5200	AZ2701-1A-100D	AZ2701-2A-100D
110	82.5	154.7	6300	AZ2701-1A-110D	AZ2701-2A-110D
200	150.0	282.4	21000	AZ2701-1A-200D	AZ2701-2A-200D

COIL SPECIFICATIONS – AC COIL				ORDER NUMBER*	
Nominal Coil VAC	Must Operate VAC	Max. Continuous VAC	Coil Current mA $\pm 10\%$	1 Form X	2 Form X
6	4.80	6.6	319	AZ2701-1A-6A	AZ2701-2A-6A
12	9.60	13.2	160	AZ2701-1A-12A	AZ2701-2A-12A
24	19.2	26.4	80	AZ2701-1A-24A	AZ2701-2A-24A
48	38.4	52.8	40	AZ2701-1A-48A	AZ2701-2A-48A
120	96.0	132.0	23	AZ2701-1A-120A	AZ2701-2A-120A
220	176.0	242.0	10	AZ2701-1A-220A	AZ2701-2A-220A
240	192.0	264.0	9	AZ2701-1A-240A	AZ2701-2A-240A

*For silver tin oxide add suffix "T." For wide contact gap add "W". For Class F add suffix "F".

MECHANICAL DATA



Dimensions in inches with metric equivalents in parentheses. Tolerance: $\pm .010$ "

AMERICAN ZETTLER, INC.

www.azettler.com

75 COLUMBIA • ALISO VIEJO, CA 92656 • PHONE: (949) 831-5000 • FAX: (949) 831-8642 • E-MAIL: SALES@AZETTLER.COM