

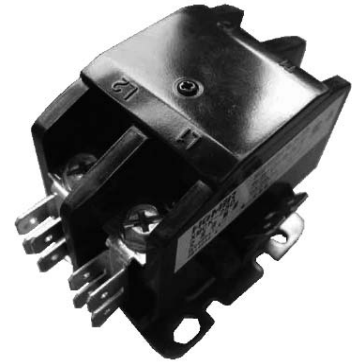
# XMCK Series

---

## Definite Purpose Contactors

### Description

American Zettler XMCK series of Definite Purpose Contactors are electro-mechanical switching devices designed ideally for the HVAC industry. The most common applications of our contactors are found in refrigeration, ARI conditioning, and heating. Other applications include elevators, food service equipment, cranes, hoists, welding machines, power supplies, vending machines, lighting, pumps and compressors. XMCK contactors are built to the ARI 780/790 standard in our ISO 9001 manufacturing facility for high performance and great reliability. XMCK is an affordable solution with 1 to 2 pole configurations and ratings up to 50 amps.



### Features

- A variety of termination options for specific application requirements
- Universal mounting plate: Easy replacement of competitor's contactors
- Convenient non-position sensitive mounting
- Performance unaffected by position mounting
- Dust-free internal construction
- UL, CUR file no. E222994



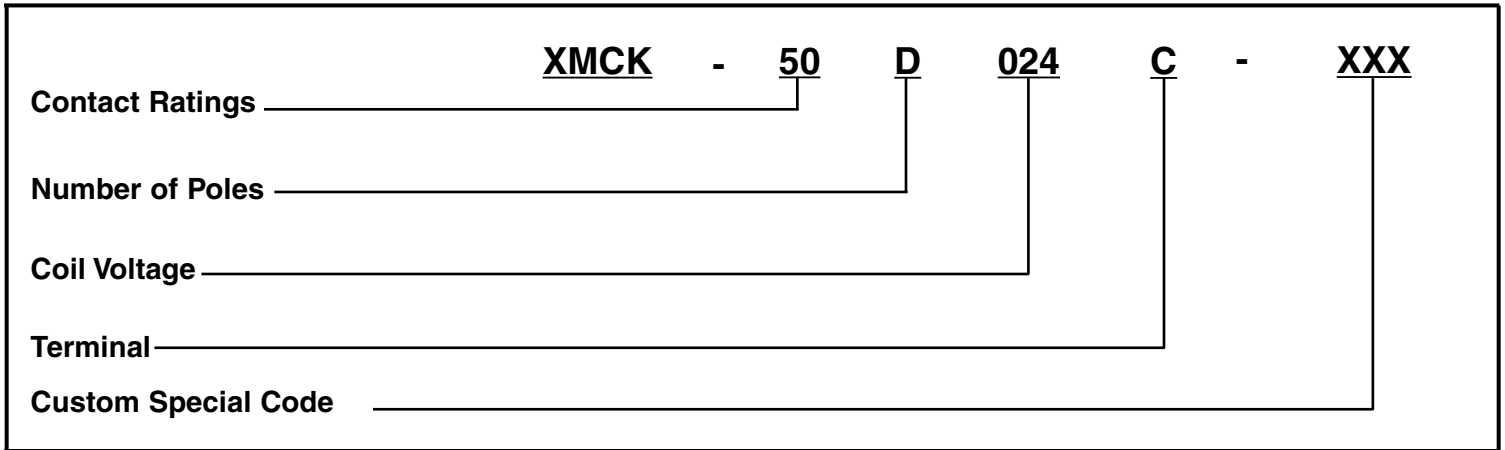
**AMERICAN ZETTLER, INC.**

[www.azettler.com](http://www.azettler.com)

75 COLUMBIA • ALISO VIEJO, CA 92656 • PHONE: (949) 831-5000 • FAX: (949) 831-8642 • E-MAIL: SALES@AZETTLER.COM

# XMCK Series

## PART NUMBERING SYSTEM



### Contact Ratings

<b>30</b>	25 FLA
<b>40</b>	30 FLA
<b>50</b>	40 FLA

### Number of Poles

<b>D</b>	1-pole
<b>DN</b>	1-pole + 1 shunt
<b>2</b>	2-pole

### Coil Voltage

	50Hz	60Hz
<b>24</b>	24	24
<b>120</b>	110-120	110-120
<b>240</b>	208-240	208-240
<b>277</b>	---	277

### Terminal with Quick Connects

<b>A</b>	Screw w/ quick connect
<b>B</b>	Sems clamp w/ quick connect
<b>C</b>	Slotted & Hex head washer w/ quick connect
<b>D</b>	Box Lug w/ quick connect
<b>E</b>	Box Lug w/ quick connect ( Line) Slotted Hex head washer w/ quick connect (Load)
<b>F</b>	Slotted & Hex head washer w/ quick connect (Line) Box Lug w/ quick connect (Load)



**AMERICAN ZETTLER, INC.**

[www.azettler.com](http://www.azettler.com)

75 COLUMBIA • ALISO VIEJO, CA 92656 • PHONE: (949) 831-5000 • FAX: (949) 831-8642 • E-MAIL: SALES@AZETTLER.COM

# XMCK Series

## Definite Purpose Contactors

### General Data

<b>Rated insulation voltage</b>	690 Vrms
<b>Agency approvals</b>	UL, CUR file E220475
<b>Operating position</b>	Vertical and Horizontal mounting recommended
<b>Ambient temperature</b>	-20°C to 70°C -40°C to 70°C
<b>Weight</b>	1Pole - 210g, 2Pole - 290g
<b>Torque</b>	Screws 25 lb-in/Lugs 25 lb-in
<b>QC Wiring</b>	The female connector should meet IEC 60760, necessary to ensure the reliability of connection between female connectors and QCterminals

### Electrical

<b>Rated Operating voltage</b>	12V-600V max.
<b>Switching frequency</b>	360 operations/hour
<b>Electrical endurance (ARI 780/790)</b>	100,000 cycles
<b>Mechanical endurance (ARI 780/790)</b>	500,000 cycles

### Electrical Ratings

Full Load Amps (FLA)	Resistive Load Amps (RLA)	Locked Rotor Amps (LRA)			Pole Form	Order Number
		240/277V	480V	600V		
25	30	150	125	100	1P	XMCK- 30D
					1P+1shunt	XMCK- 30DN
32	40	150	75	50	2P	XMCK - 302
					1P	XMCK - 40D
		1P+1shunt	XMCK - 40DN			
40	50	180	150	-	2P	XMCK - 402
					1P	XMCK - 50D
		1P+1shunt	XMCK - 50DN			
40	50	240	160	100	2P	XMCK - 502
					240	150

### Coil Data

Pole Form	Inrush VA	Sealed VA	Sealed (W)	Pickup Voltage	Dropout Voltage
1 pole (D)	32	7.0	2.0-4.0	$\leq 0.8 U_s^*$	$\geq 0.2 U_s^*$
1 pole + 1 shunt (DN)					
2 pole (2)	40	8.0	2.5-4.5		

\*Us = nominal coil voltage



**AMERICAN ZETTLER, INC.**

[www.azettler.com](http://www.azettler.com)

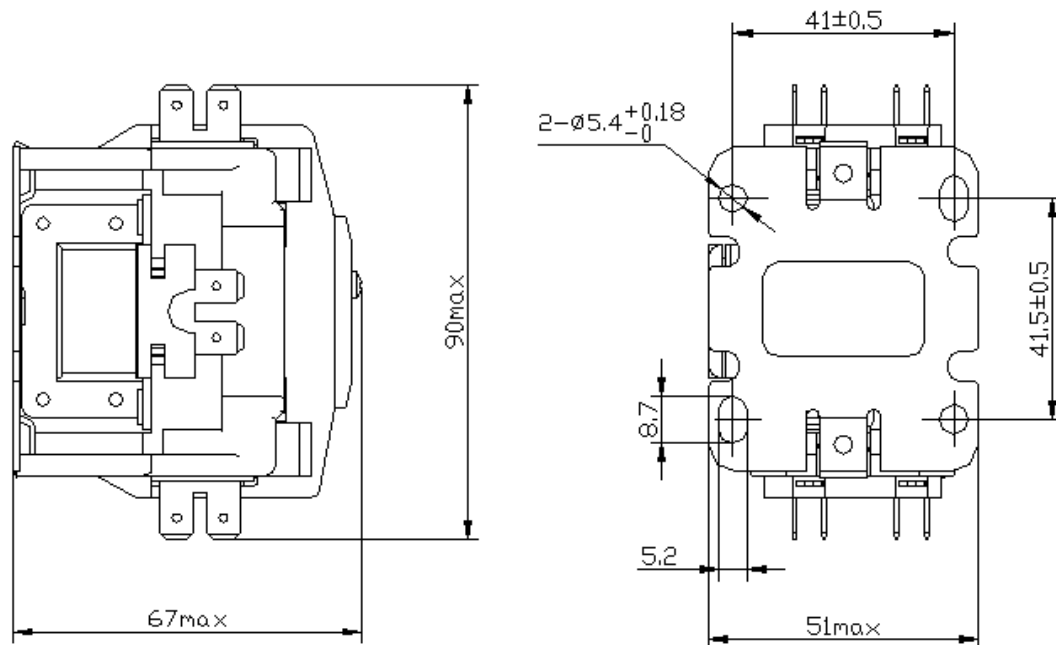
75 COLUMBIA • ALISO VIEJO, CA 92656 • PHONE: (949) 831-5000 • FAX: (949) 831-8642 • E-MAIL: SALES@AZETTLER.COM

# XMCK Series

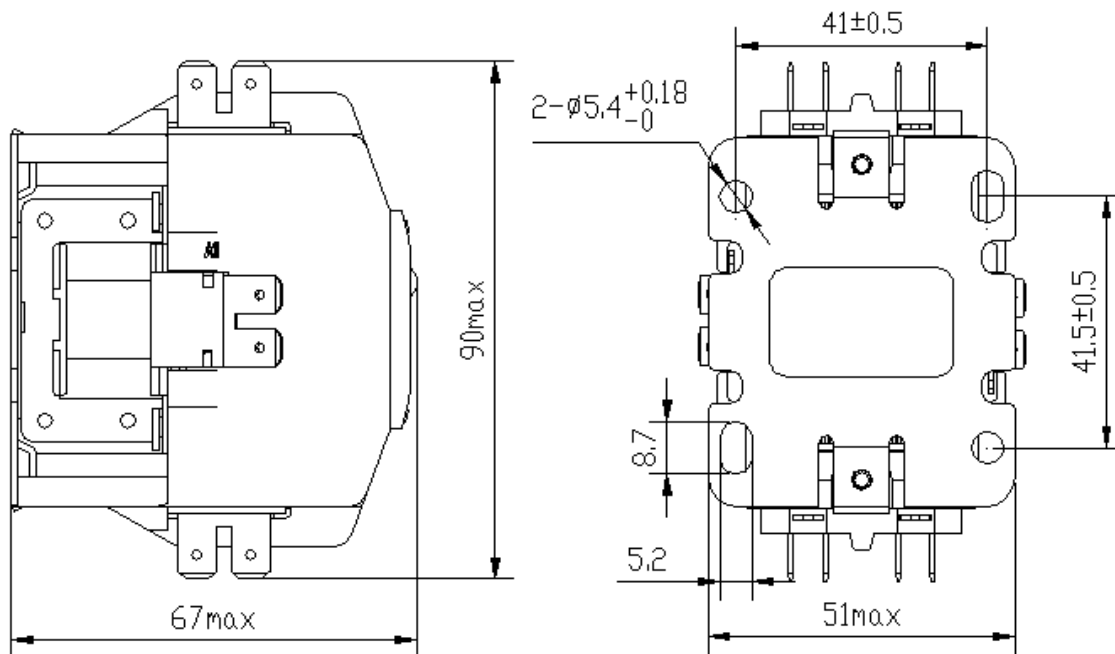
## Definite Purpose Contactors

### Note:

1. The locking torque for load circuit screw (M5) : 2.5N.m ~ 3.0 N.m.
2. If using terminal wiring, the harness should conform to IEC 60760 standard to insure safe wiring connection.



1 Pole/ 1Pole + 1 Shunt (25-40FLA)



2 pole (25-40FLA)



**AMERICAN ZETTLER, INC.**

[www.azettler.com](http://www.azettler.com)

75 COLUMBIA • ALISO VIEJO, CA 92656 • PHONE: (949) 831-5000 • FAX: (949) 831-8642 • E-MAIL: SALES@AZETTLER.COM